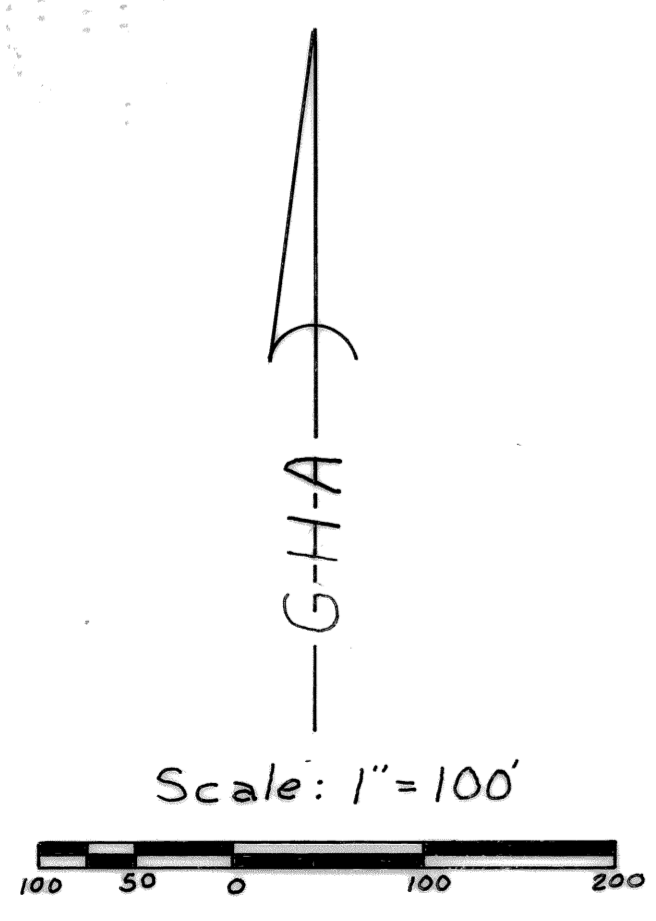
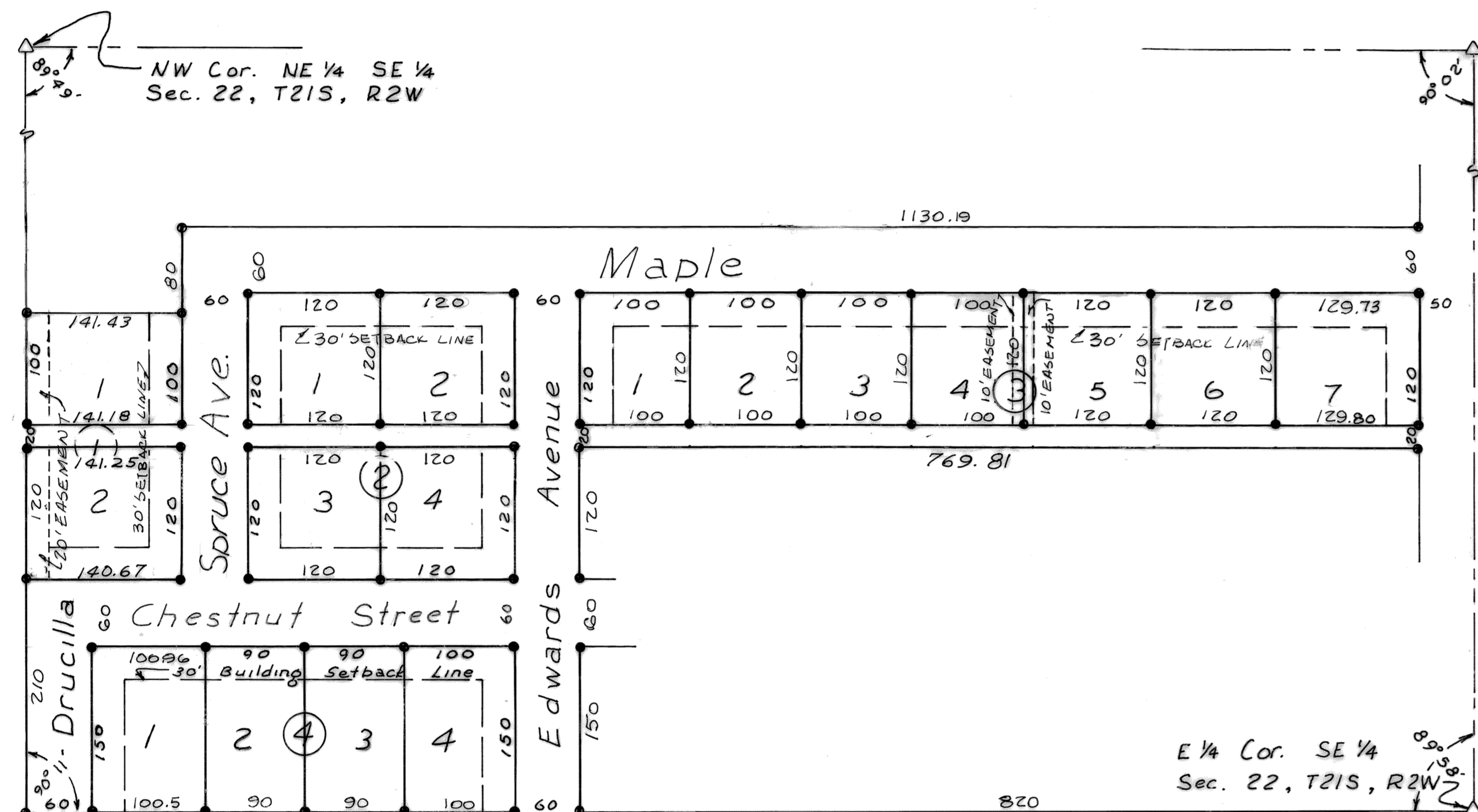


COUNTRYSIDE II ADDITION

TO THE
CITY OF MOUNDRIDGE, KANSAS

AN ADDITION IN THE NE 1/4 SE 1/4 SEC. 22, T21S, R2W
OF THE 6TH PRINCIPAL MERIDIAN,
M^{PH}ERSON COUNTY, KANSAS



I hereby certify the details of this
plat to be true and correct this
28th day of MARCH, 1975.

Geo Holcomb
Geo Holcomb - P.E. 2490

DESCRIPTION:

This is a subdivision of a portion of the Northeast quarter (NE 1/4) of the Southeast quarter (SE 1/4) of Sec. 22, Township 21 South, Range 2 West of the 6th Principal Meridian, more particularly described as follows:

Commencing at the Southeast corner of the Northeast quarter (NE 1/4) of the Southeast quarter (SE 1/4) of Section 22, T21S, R2W, thence west along the South line of said NE 1/4 SE 1/4 820 feet for a place of beginning; thence west along the South line of said NE 1/4 SE 1/4 500.5 feet to the Southwest corner of said NE 1/4 SE 1/4; thence north along the West line of said NE 1/4 SE 1/4 450 feet; thence East, 450 feet north of and parallel to the South line of said NE 1/4 SE 1/4 141.43 feet; thence North (defl. & 90° Lt) 80 feet; thence East 530 feet North of and parallel to the South line of said NE 1/4 SE 1/4 130.19 feet; thence South, 50 feet West of and parallel to the East line of said NE 1/4 SE 1/4 200 feet to the North line of Countryside Addition to the City of Moundridge; thence West, 330 feet North of and parallel to the South line of said NE 1/4 SE 1/4 and along the North line of Countryside Addition 769.81 feet; thence South, defl. & 90° Lt and along the West line of Countryside Addition 330 feet to the place of beginning.

DEDICATION:

The undersigned proprietor of the above described tract of land has caused the same to be subdivided in the manner shown on the accompanying plat which subdivision shall be known as "Countryside II Addition."

EASEMENTS:

Easements are hereby dedicated for public use, the Right-of-way which is shown in dotted line on the accompanying plat, and said easements may be employed in perpetuity as a covenant running with the land for the purpose of installing, repairing, reinstalling, replacing, and maintaining sewers, waterlines, gas lines, electric light lines and poles, telephone lines and poles, and other forms and types of public utilities now or hereafter being generally utilized by the public.

STREETS:

Streets shown on this plat and not heretofore dedicated to public use are hereby so dedicated.

BUILDING LINES:

Building lines or setback lines are hereby established as shown on the accompanying plat and no building or portion thereof shall be built or constructed between this line and the street line.

IN TESTIMONY WHEREOF: we have caused these present to be signed this 1st day of April, 1975.

State of Kansas)
County of M^{PH}erson) SS

Melvin A. Jantz
Melvin A. Jantz
Sadie M. Jantz
Sadie M. Jantz

On this 1st day of April, 1975 before me appeared Melvin A. Jantz and Sadie M. Jantz, his wife, who are personally known to me to be the same persons who executed the foregoing dedications and plat and such persons duly acknowledge execution of same.
IN WITNESS THEREOF: I have hereunto set my hand and affixed my notarial seal at my office this 1st day of April, 1975. My commission expires January 6, 1976.

Arthur K. Dieck
Notary Public

Received and approved by the county engineer
this 5th day of May, 1975.

County Engineer *Melvin Ferguson*
By order of the City Planning Commission the
foregoing plat of Countryside II Addition is hereby
approved this 1st day of April, 1975.

Chairman *Dorinda J. Jantz*
Secretary *Nelson D. Halle*
By order of the Board of Commissioners, County of
M^{PH}erson the foregoing plat of Countryside II
Addition is hereby approved this 5th day of May, 1975.

Chairman *Carl V. Oakleaf*
Clerk *Margaret Bryan*

By order of the Governing Body the foregoing plat of
Countryside II Addition is hereby approved this 1st
day of April, 1975.

Mayor *Floyd H. Kuehnel*

Clerk *James L. Lehning*

#2220
Recorded this 6 day of June, 1975 in
book _____, page 4:20 PM Plat # A 18

Register of Deeds *Paul H. Robinson*
M^{PH}erson County, Kansas.